

Kidde Fire Systems Flow Calculation Software for Engineered Suppression Systems

Version 4.0



Effective: April 2023
K-85-100 Rev AM

FEATURES

- All platforms accessed via common User Interface (see Table 1).
- Compatible with Windows XP, 7, 8, and 10 operating systems
- Operates on 64-bit computers
- User-friendly data entry and editing capability
- Branch-by-branch manifold data entry enables easy modification
- Segment Information Window included in the Isometric Drawing to display information about pipe type, pipe diameter, length, and elevation
- 2D and isometric views and outputs provided
- Output Report includes component part numbers
- A pair of nodes designation for every fitting in the pipe network
- Flow Calculation output includes pressure venting calculations for all chemical clean agents
- Option to select ISO14520 or NFPA 2001 method for calculating the Altitude Correction Factor.
- Agency listed (See manuals for specific listings)

DESCRIPTION

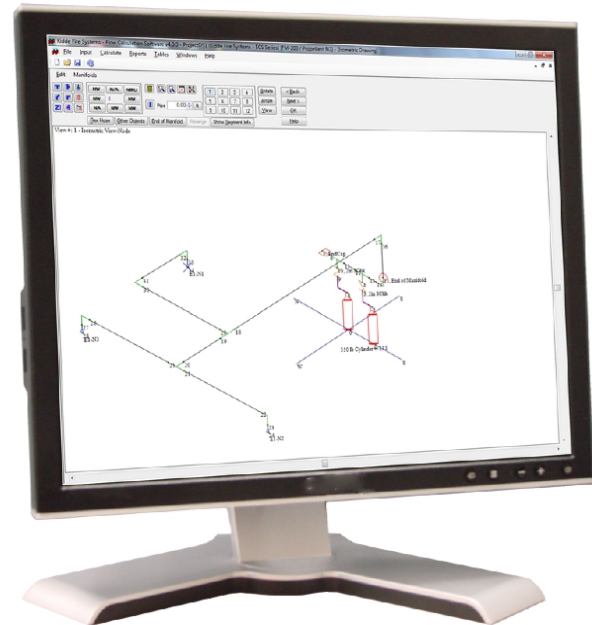
The Kidde Fire Systems Flow Calculation Software for engineered suppression systems is a sophisticated calculation routine for predicting the flow of an agent through a pipe network system. The Windows-based user interface provides a convenient, fast, and user-friendly method for entering information about the system.

The Windows-based user interface now uses Microsoft's NET technology to enable compatibility with Microsoft's operating systems in years to come.

Operating instructions are detailed in the software manuals listed below.

Table 1

Part Number	Agent	Software Guide Rev	Approvals
06-236272-001	ECS™ HFC-227ea	AD	UL, ULC, FM
06-237379-001	ECS™ 360 with Fluoro-K	AD	UL, ULC, FM
06-237379-001	ECS™ 360 with 3M™ Novec™ 1230	AD	UL, ULC, FM
06-236091-001	ADS™ HFC-227ea	AD	UL, ULC, FM
06-237256-004	ADS™ with Fluoro-K™	AA	UL, ULC, FM
06-237256-004	ADS™ 3M™ Novec™ 1230	AA	UL, ULC, FM
06-236200-001	FE-13™	AB	UL
06-235945-001	HP CO2	AD	UL, ULC, FM
06-237588-001	ECS-500™ with Fluoro-K™	AA	UL, ULC, FM
06-237588-001	ECS-500™ with 3M™ Novec™ 1230	AA	UL, ULC, FM
06-237520-001	Natura™ Inert Gas System	AD	UL, FM



Isometric layout of piping is clearly displayed.

ORDER INFORMATION

Version 4.0 Flow Calculation Software is available for download from the distributor extranet site (kiddefiresystems.com).

A HASP key (P/N 06-118361-009) is required to run the software and can be ordered via normal channels.

EXPORT INFORMATION (USA)

Jurisdiction: EAR
Classification: EAR99
This document contains technical data subject to the EAR.

All trademarks are the property of their respective owners.
©2023 Carrier

This literature is provided for informational purposes only. KIDDE-FENWAL, INC. believes this data to be accurate, but it is published and presented without any guarantee or warranty whatsoever. KIDDE-FENWAL, INC. assumes no responsibility for the product's suitability for a particular application. The fire suppression system design, installation, maintenance, service and troubleshooting must be performed by trained, authorized Kidde Fire Systems distributors for the product to work correctly. If you need more information on this product, or if you have a particular problem or question, contact KIDDE-FENWAL, INC., Ashland, MA 01721 USA. Telephone: (508) 881-2000.

Kidde Fire Systems
400 Main Street
Ashland, MA 01721
Ph: 508.881.2000
Fax: 508.881.8920
kiddefiresystems.com